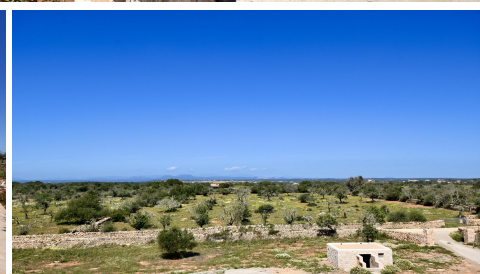




JEROME LEDIN
Inmobiliaria



BEAUTIFUL COUNTRYHOUSE WITH POOL NEAR THE SES SALINES LIGHTHOUSE

REF: 1713

This beautiful farm is located in a very quiet area near the Ses Salines lighthouse. It has 4 bedrooms, 4 bathrooms, kitchen, living room and dining room. In addition to an orange pool to give it an exotic touch to enjoy with friends and family.



300 m²



15.000 m²



4



4



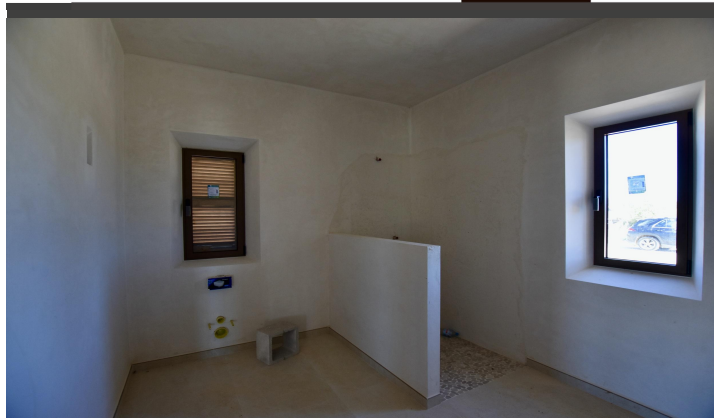
A/C



2.850.000 €



JEROME LEDIN
Inmobiliaria



Ref: 1713